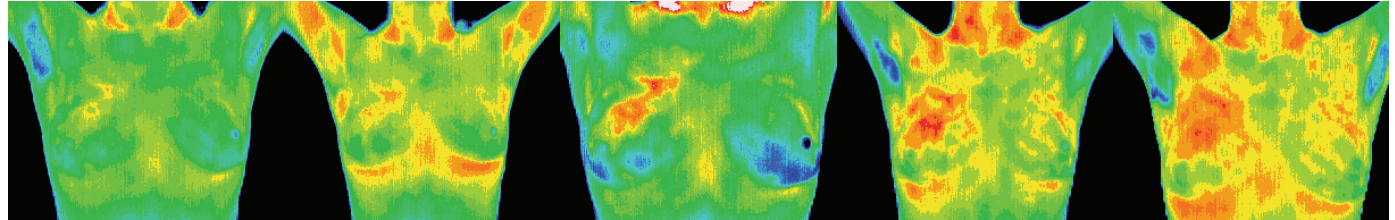


# Average Growth Rate of Breast Cancer Tumor

Cancer cells double in number on average every 90 days

90 days	2 cells
1 year	16 cells
2 years	256 cells
3 years	4,096 cells
4 years	65,536 cells
5 years	1,048,576 cells
6 years	16,777,216 cells
7 years	268,435,456 cells
8 years	4,294,967,296 cells

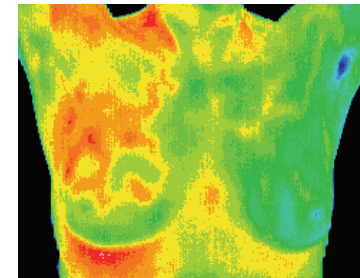


Still Undetectable with mammography

Doubled 32 times\* and normally detected by mammogram at this stage  
\*(1cm size)

Source: Buchanan JB, et al. Tumor growth, doubling times, and inability of the radiologist to diagnose certain cancers. Radiol Clin N Am. 1983;21:115-26

**40 Doublings (Approx 10 years) is generally considered lethal**



Screening thermography has the opportunity to **detect changes** at any stage in the development from the first year through to when a tumor is dense enough to be seen with mammography. This **early detection** of change can lead to earlier diagnosis and better treatment options as well as the opportunity for patients and their healthcare practitioners to **intervene** at an early stage with **preventative** treatment.